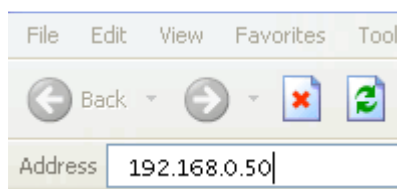


Configuring DWL-2100AP Wi-Fi Access Point with WEP and Repeater mode

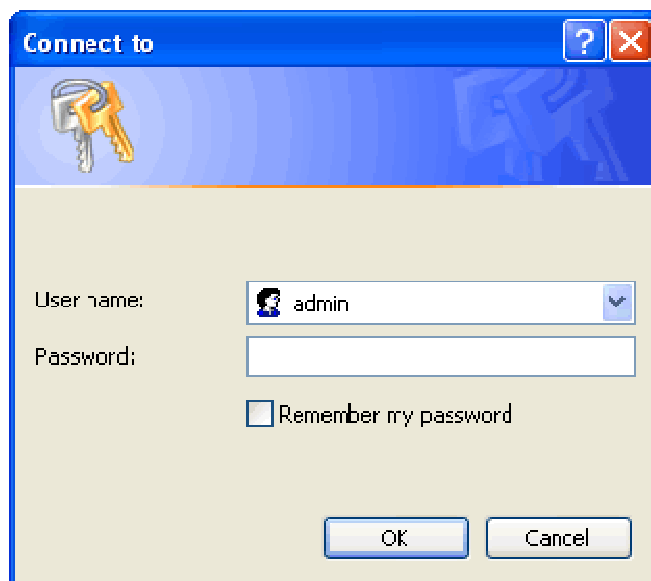
Please Note: Use only hard-wired network connections, to do the setting.
** Disable firewall in your PC to avoid login problem**
** you have to manually fix an IP address for your PC**

Step 1 Connect Your PC (Laptop) to the Access Point DWL-2100AP using Network cable.

Step 2 Launch your IE (Internet explorer) and key in 192.168.0.50 in the address column and press enter.



Step 3 Enter your Username: *admin* and no password (if it is default) click on OK



Step 4 You will see a D-Link web page shown as below, Choose **Home > Wireless**, select the relevant options and key in the SSID and WEP key.

The screenshot shows the D-Link DWL-2100AP web interface. The 'Home' and 'Wireless' tabs are highlighted. The 'Wireless Settings' section includes: Wireless Band (IEEE802.11g), Mode (Access Point), SSID (lifestyle), SSID Broadcast (Enable), Channel (11), Authentication (Shared Key), and Key Settings (Encryption Enabled, Key Type HEX, Key Size 64 Bits, Valid Key First, and a First Key field with 10 dots). The 'Apply' button is highlighted.

IF you choose **HEX**

For **64Bits** you have to enter **10** characters from **0 ~ 9, A ~ F**

For **128Bits** you have to enter **26** characters from **0 ~ 9, A ~ F**

For **152Bits** you have to enter **32** characters from **0 to 9, A to F**

IF you choose **ASCII**

For **64Bits** you have to enter **5** characters (**A ~ Z, 0 ~ 9**)

For **128Bits** you have to enter **13** characters (**A ~ Z, 0 ~ 9**)

For **152Bits** you have to enter **16** characters (**A to Z, 0 to 9**)

It's highly recommended to use **HEX** as your **WEP** mode.

Only **one key** is required

Step 5 After configuring the wireless settings and the WEP key, click on **Apply**, and you are done setting up the Access Point (AP) with WEP security key / network key enabled.

Step 6 Before leaving the set up web page, take note of the AP device MAC address, if you are planning to use AP Repeater.

Step 7 To find out the AP MAC address, choose **Status > Device Info**

DWL-2100AP

Home Advanced Tools **Status** Help

Device Information

Firmware Version: v2.10eu

MAC Address: 00:11:95:03:77:6e

Ethernet

Get IP From: Manual

IP address: 192.168.0.50

Subnet Mask: 255.255.255.0

Gateway: 0.0.0.0

Wireless (802.11g)

SSID: lifestyle

Channel: 11

Super G Mode: Disabled

Rate: Auto

Security Level: Shared Key / Encryption Enabled

Help

Step 8 To extend network signal coverage using another AP device as a repeater, perform Steps 2 and 3 stated above on the new AP device.

Step 9 Before setting up the **second device** for repeater mode, go to the **Home > LAN** menu, and configure a different IP address for the new AP device.

DWL-2100AP

Home Advanced Tools Status Help

LAN Settings

Get IP From: Static (Manual)

IP address: 192.168.0.51

Subnet Mask: 255.255.255.0

Default Gateway: 0.0.0.0

Apply Cancel Help

Step 10 Next, go to the **Home > Wireless** menu and select *AP Repeater* for **Mode**, and the corresponding Channel and MAC address of the original (root) AP device.

Wireless Settings

Wireless Band: IEEE802.11g

Mode: AP Repeater Change mode to AP Repeater

SSID Broadcast: Enable

Channel: 11 2.462 GHz Auto Channel Scan

AP Repeater

Root AP MAC Address: 00:11:95:03:77:6e

SSID: lifestyle

Site Survey Scan

Type	CH	Signal	BSSID	Security	SSID
<input type="radio"/> AP BSS	1	80%	00:0f:3d:02:86:11	OFF	Hot_Spot_2
<input type="radio"/> AP BSS	6	88%	00:0f:3d:a6:60:7c	OFF	G604_WIRELESS
<input type="radio"/> AP BSS	6	98%	00:13:46:51:1a:7f	WPA_PSK	intermittent
<input checked="" type="radio"/> AP BSS	11	84%	00:11:95:03:77:6e	WEP	lifestyle
<input type="radio"/> AP BSS	6	100%	00:0f:3d:29:71:71	WPA_PSK	Jontest
<input type="radio"/> AP BSS	9	10%	00:0f:b5:52:7a:17	WPA_PSK	

Step 11 To configure WEP for the AP repeater, select *Shared Key* for **Authentication** and enable encryption, choosing the **Key Type** and **Key Size** required, and inputting the WEP key.

Authentication: Shared Key WEP

Key Settings

Encryption: Disabled Enabled

Key Type: HEX Key Size: 64 Bits 64-bits
128-bits
152-bits

Valid Key: First

First Key:

Second Key:

Third Key:

Fourth Key:

✔ ✘ +
Apply **Cancel** **Help**

Step 12 Click **Apply** and you are done with your Access Point configuration, WEP security key / network key authentication and AP repeater mode set up.