

■ CORELDRAW 5

by Edmond Ng

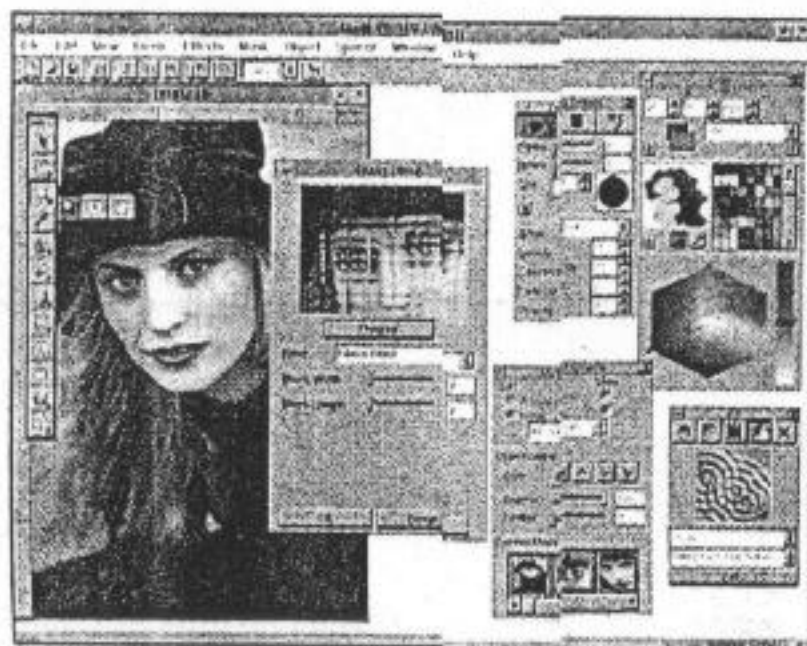
COREL's resolve to develop products to meet the demands of users can be seen in the launch of a range of products last year which included CorelDraw 5, CorelGallery, CorelFlow, Corel Ventura 5 and Corel Photo-Paint.

CorelDraw 5 itself consists of a full suite of programs and is a complete graphic and publishing solution in a box.

Under The Bonnet

Modules under CorelDraw 5 includes the draw program, CorelDraw; the business charting module, CorelChart; the photo-editing and painting module, Corel Photo-Paint; the animation module, CorelMove; the slide-show module, CorelShow; and the desktop publishing module, Corel Ventura.

In addition, CorelDraw 5 also includes the following general utilities: CorelMosaic, CorelTrace, Corel Capture, CorelQuery, Corel-



Glass blocking is now possible on Corel Photo-Paint.

PRODUCT REVIEW

Kern, Corel DB Editor, Adobe Acrobat Reader and TagWrite.

Also bundled with CorelDraw 5 are three CD-ROMs, one of which contains 100 Kodak Photo CD high resolution pictures with graphic utilities.

The other two features 75 Corel Ventura templates, 50 CorelDraw templates, 1,000 animated files, 22,000 clipart images, a multimedia Quick Tour and over 825 fonts.

CorelDraw 5 is targeted at DTP professionals and graphic artists, while the earlier versions, 3 and 4, will be aimed at SOHO and advanced users.

New Features

In CorelDraw 5, the vector-based drawing module now includes more icons and tools to enable a one-click operation to most of the pull-down menu functions.

Corel has also included a self-explanatory pop-up ribbon text at the pointing of each icon so that users will not confuse the icons.

In addition, the toolbox is now customisable and can be floated around as in Corel Photo-Paint.

Included in the Draw module are four new effects roll-up, namely trim, intersection, lenses and power clips. An improved extrusion effect now allows 3 light sources and pre-set special effects.

ONE GIANT LEAP FOR DTP ON PC PLATFORM

The trim effect allows the trimming of an object that has been intersected by another, while the intersection effect allows the intersected portion of the overlap to be created as a third object.

Lenses allows the user to place, for example, a circle, on a photo image or drawing and specify the circle to show a translucent see-through of the background, in any colour.

Power clip facilitates the placement of text over a background or image with automatic text wrap.

Other enhancements in the Draw module include improved text handling, text kerning, colour calibration, precision drawing, and technical illustration tools, not to mention speed.

Corel Ventura 5

Corel's purchase of Ventura means that Corel Ventura 5 is now included as a module in the program. Corel has also significantly improved Ventura to work with CorelDraw 5.

Ventura 5 now features a new, easier-to-use GUI overcoming one of the biggest problems with earlier versions. It conforms to Windows and CorelDraw standards, with tabbed dialogue boxes similar to Windows 95, and roll-up menus.



You can also perform irregular text-wraps around graphic objects and rotate text and graphics by increments of 0.1 degree.

Corel Photo-Paint

Photo-Paint has also been boosted in CorelDraw 5 with the company claiming it to be a full-featured image-editing program.

Enhancements include improved memory, file management, and more powerful masking, allowing three ways of masking — regular, colour and transparency.

Also new in this module are artistic filters, including vignette, glass block, wet paint, swirl and smoke glass. This module now also supports industry standard plug-in filters, such as Kai's Power Tools.

CorelChart & CorelMove

CorelChart, the data-driven module, now sees an additional 10 new chart types, including gantt, radar, polar and bubble charts; and over 250 new spreadsheet functions, such as mathematical, engi-

neering, financial, logical and statistical.

CorelMove's major enhancement in this version is the morphing feature. It is now possible to morph multiple pictures or bitmaps together in animated sequence.

Touching up of the areas of morphing for a transition effect is also possible. Such techniques were used in Michael Jackson's *Black or White* music video.

CorelShow

CorelShow is a multimedia slide-show presentation module. New features include faster slide show generation, direct on-screen text entry for easy bullet point creation, speaker notes.

Previous versions of calls up OLE each time editing text is required and sometimes result in an increase of memory calls.

Instead of having to launch the CorelDraw module to type and edit text, this new version saves time and memory by including text tools readily available for input directly within the Show module.

Conclusion

There are few things you should consider when buying or upgrading to this version. First, the minimum memory requirement for this version is 8 Mb RAM or higher. The hard disk requirement is about 48 Mb for a full installation.

A CD-ROM drive is almost a necessity as CorelDraw 5 comes in only CD-ROM or diskette/CD-ROM versions. All clipart are also only stored on CD-ROM thus rendering them inaccessible to anybody without a CD-ROM drive.

Installation is also a whole lot easier with the CD-ROM version as the diskette/CD-ROM one comes with in 16 3.5-inch HD disks — enough to try anyone's patience.

On the whole, the suite offers good value for money.

EDMOND NG is the chairman, Computerisation Group, of the Singapore Microcomputer Society.